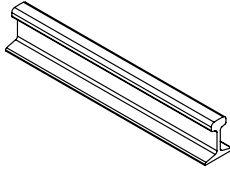
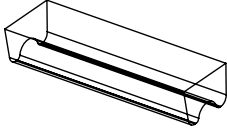
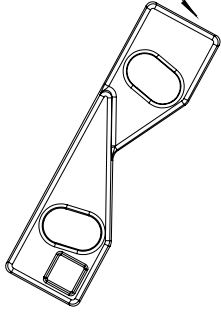


Kaynak Bölgesi
Kaynak Ağızı Δ 4mm



Krapo Özellikleri

Ürün Kodu	C Max	Sıkma Kuvveti	Kabuledilebilir Yük	Ağırlık	Hammadde
CRAPEX 800	33 mm	155 Nm	125 kN	1,45 kg	DIN 17100 S 355 J2

Kaynak Bilgileri:

DIN 17100 - Wst Nr: 1.0562 :S 355 J2
NFA 35-501: E36-3
BS 4360 : 50 C
EURO NORM 10025 : S355 JO

Elektrod Bilgileri:

DIN 1931 : E51 55B 10 110
AFNOR 81-309 : E51 5/5B 110 26 BH
ISO 2560 : E51 5B 110 26
ASME IIC SFA 5.1 : E 7018-1

Kauçuk Bilgileri

Sertlik	75° +/- 5°
Çekme Mukavemeti	12,5 N/mm ²
Genleşme	90%
Çalışma Sıcaklığı	-30° - 130° C
Titreşim Azaltma	45% - 50%
Ses Azaltma	8% - 10%

Ray Tipi	A	B	E	Ağırlık kg/m
A 45	45	125	125	22,1
A 55	55	150	150	31,8
A 65	65	175	175	43,1
A 75	75	200	200	56,2
A 100	100	200	200	74,3
A 120	120	220	220	100
CR 104	63,5	127	127	51,59
CR 105	65,1	131,8	131,8	52,09
CR 135	76,2	131,8	131,8	66,97
S 24	53	90	90	24,43
25 kg / m	50	90	90	25
AFNOR 30	56	106	106	29,98
30 E1	60,3	108	108	30,13
33 E1	58	105	105	33,147
36 E1	60	100	100	36,26
40 E1	67	125	125	40,95
46 E4	65	135	135	46,9
49 E1	67	125	125	49,39
50 ES	67	135	135	49,9
54 E1	70	140	140	54,77

